



Beaumont Sustainability Strategy Carbon Management Plan

2024 - 2030



Please consider the environment before printing this document

Table of Contents

Student EcoCode	1
NGA DfE Education Sustainability and Climate change	2
Beaumont Vision	3
Achievements to Date	4
Roles and Responsibilities	4
Committees	5
Beaumont Priority Areas	6
Environmental Education	7
Biodiversity and the Natural Environment	8
Buildings and Construction	9
Energy and Carbon Management	10
Community Engagement	11
Food and Catering	12
Procurement	13
Travel and Transport	14
Waste Management	15
Water Management	16
Conclusion	17





Student EcoCode



I will try to minimise waste and will recycle and reuse what I can.



I will utilise the correct bins to dispose of my litter.

I will try to bring my own reusable water bottle to reduce my plastic waste.



I will consider sustainable food options when deciding what to eat.



I will care for and actively protect our School environment.

I will aim to educate myself and others about the impacts of personal choices on the environment.



Finally, I will continue to apply this code outside of my school life and beyond Beaumont aiming to develop sustainable habits for positive change.



NGA - Greener Governance - Environmental sustainability: a whole school approach

A whole school approach to environmental sustainability, by definition, should encompass all aspects of school life, learning and management.

- Curriculum: teaching and learning
- Campus: buildings, grounds and budget
- Community: inside and out
- Culture: caring and respect

DfE Education Sustainability and Climate Action Plan

(DfE target of reducing carbon emissions by 75% by 2037 against a 2017 baseline)

The DfE highlight 4 key areas that should be included within a sustainability and climate change strategy:

- Decarbonisation, for example calculating and taking actions to reduce carbon emissions, such as becoming more energy efficient
- Adaption and resilience, such as taking actions to reduce the risk of flooding and overheating
- Biodiversity, for example engaging with the National Education nature Park and enrolling in the Climate Action Award
- Climate education and green careers, such as ensuring the education you provide gives knowledge-rich and comprehensive teaching about climate change, and that your teaching staff feel supported to offer this



**BE -
SUSTAINABLE**



Beaumont Vision

To put sustainability at the heart of the School's development by educating our community about environmental issues and by adopting effective sustainability practice that has a positive impact on local, national and international communities.

- To equip all our students with the environmental knowledge they need to contribute to mitigating climate change
- To embed sustainable development principles within all our curriculum programs
- To Achieve Net Zero by 2030
- To take all reasonable steps to reduce Beaumont's impact on the environment

By raising levels of sustainability literacy, we will educate our staff and students (and their families) about our individual and collective responsibilities. Through a variety of learning opportunities, including outdoor education, students will understand their role in sustainability and the benefits it will bring to them as well as the wider community.

Positive and Impactful Sustainability Practice

As well as raising awareness of environmental issues, we seek to achieve outstanding environmental performance in the way that the School is run and is seen to be run. By limiting the negative impact of our institution on the environment - and by taking responsibility for and, where possible, mitigating the impact of its operation - we aim to implement effective sustainability practice.

Above all, we recognise that it is vital for us to reduce our carbon footprint and work towards becoming carbon neutral. By seeking to improve the quality of our school and local environment - and by promoting the benefits of increased interaction with the natural world - we intend to safeguard the health and wellbeing of our School and wider communities.

BE
SUSTAINABLE



Beaumont Achievements to date

Beaumont has already achieved so much on its sustainability journey since we first established the Sustainability Plan in April 2022



Switch Off Campaign
Annual Year 7 Sustainability days are part of
Personal Development Week
Whole school reads have a sustainability focus
Electric Charge points
Renewable electricity supplier
Energy Audit completed
Lets go Zero Climate Advisor Programme
Part of Hertfordshire Sustainability network
Plastic Free Status – achieved in July 2022
HomeRun App
BirdWatch

Roles and Responsibilities

Staff

We expect all Beaumont Staff to be positive environmental role models. By encouraging our staff to reflect upon their personal and professional practices, we want them to support our environmental agenda and to make positive changes wherever possible e.g. minimising the wasteful use of resources; using water bottles and reusable cups; eliminating single-use plastics; reducing paper usage in printing and photocopying; using public transport or sharing lifts or walking or cycling to work.

Students

As with our staff, we expect our students to act in a way that demonstrates concern for the environment and shows a commitment to sustainable living. Through our integrated environmental education programmes, we seek to inspire our students to be reflective and pro-active sustainability champions. In addition, we hope that some of our students will pursue careers in the green technologies, becoming innovators and creative problem solvers of the future.

Beaumont Community

We request the support of the whole Beaumont community to help us achieve our sustainability goals





Key Roles:

- Headteacher
- Trustee with lead responsibility for Sustainability
- Sustainability Lead - Education and extra - curricular
 - Student Sustainability group
 - Student Eco-Council
 - Staff Leads from each curriculum department
- Business Manager and Site Manager - Sustainability operations leads

Ambassadors for each area

- Travel and Transport
- Energy
- Food Waste
- Recycling
- Water
- Communications and marketing
- Biodiversity and Natural Environment
- Policy and Strategy

Key Function of the Staff:

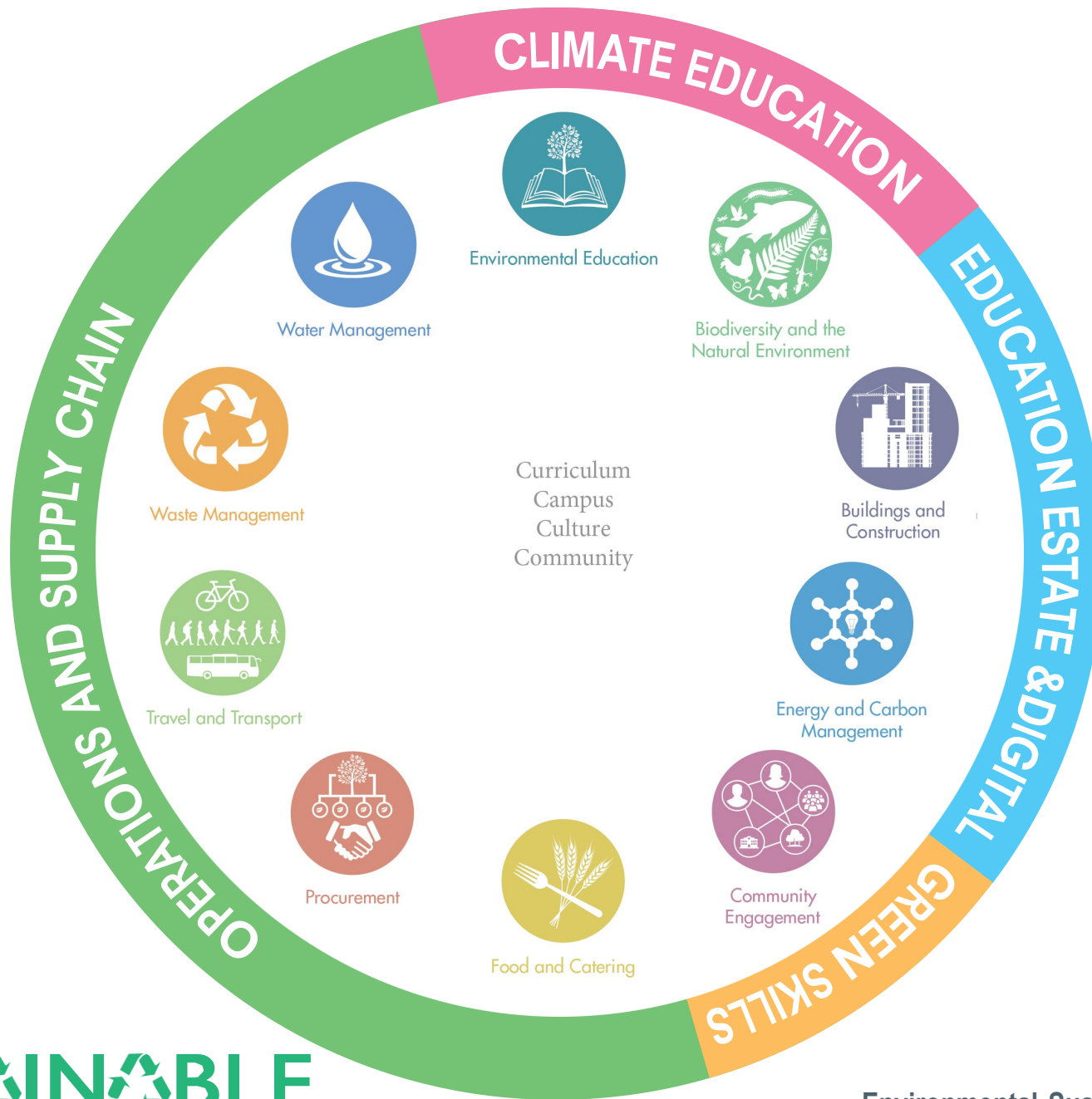
- Creating and shaping the Environmental Sustainability Policy and Strategy and having a strategic and operational oversight of its implementation
- Establishing clear, measurable and ambitious targets and objectives
- Monitoring, reviewing and evaluating the progress
- Communicating with the relevant stakeholders and preparing reports/information
- Allocating adequate departmental resources to ensure the success of the Environmental Sustainability Strategy

Key Function of the Students:

- To be the Student Voice of the school
- Initiating and taking part in sustainability activities
- Working with Staff Ambassadors to drive a whole school approach
- Embracing and championing the sustainable curriculum and extra - curricular opportunities



Beaumont Priority Areas



**BE
SUSTAINABLE**

Environmental Education

Targets

- To educate the School community about key environmental issues and the climate crisis and how we can all play a role in Sustainability

Key performance indicators

- Development of the Environmental Sustainability curricular across all Year groups
- Visible growth of a 'Green Culture' in school through the increased adoption of sustainable practices e.g. Printing/ photocopying quotas are reduced; sustainable modes of transport to School are adopted; single use plastic is eliminated; reusable drinks bottles are used

Key actions

- Audit, review and explore the current curricular (including the academic and co-curricular, PSHE Education, visiting speakers, assemblies, pastoral time, etc.); identify opportunities to embed and deliver environmental sustainability education
- Provide appropriate training (both general and role specific) for staff and pupils
- Identify the key global, environment issues (e.g. Ocean acidification, deforestation, pollution, re-cycling etc.) that will be delivered in an age-appropriate way
- Increase pupil engagement in the School's action groups; develop the effectiveness of pupil voice and leadership opportunities in this area (e.g. 'sustainability champions')
- Encourage innovative thinking and develop our pupils' problem-solving capabilities e.g. Critical thinking skills and creative/entrepreneurial competitions linked to sustainable solutions
- Promote awareness, through our careers programme, of job opportunities in green technologies and the wider economy (e.g. social, ethical, corporate responsibility)
- Build relations with parents and wider community linked to environmental fields

Objective	Target	Measure
Ensure every student receives Environmental Education within their curriculum regardless of their chosen courses	50% rise in courses that include Environmental Education by 2025 100% of courses integrate Environmental education within their curriculum by 2030	Curriculum plans
Embed Carbon literacy within Beaumont	Over 75% Staff accredited by 2025 and Over 75% students accredited by 2027	Certificates by Carbon Literacy

Supporting policies and plans

- Departmental Developmental Plans
- Staff and Pupil Wellbeing Policies; Personal Development Programme



To elevate Environmental Sustainability to the same level of importance as Safeguarding and Welfare, and Health and Safety



Biodiversity and the Natural Environment

Targets

- To ensure that careful attention is paid to biodiversity, ecosystems and the natural environment whilst planning the landscaped elements of capital projects
- To introduce re-wilding into appropriate areas within the school site.
- To make best use of outdoor spaces to encourage biodiversity
- To keep the natural environment of the school site litter free
- To help our users to experience increased physical and mental health well-being benefits through optimising and enjoying the usage of the green space areas of our School

Key performance indicators

- % of green spaces used for rewilding
- Feedback from surveys of our site users about our green space usage
- Numbers of pupils taking part in the re-wilding projects

Key actions

- Establish a programme of rewilding
- Ensure that new build plans include specific methods to identify and implement biodiversity actions (e.g. green roofs, grey water harvesting)
- Enhance the area of meadow (nonpitch) grassland and create attractive social spaces (e.g. through clever use of seating) which staff and pupils can enjoy
- Increase the number of trees and plants on the site; increase the number and variety of plants that we propagate/ germinate on site and in the greenhouse
- Continue to enable pupils to play an active role in the development of the green spaces through their engagement in the various clubs
- Use the DfE National Education Nature Park to map Beaumont's Estate

Objective	Target	Measure
Increase the areas of re-wilding on the School grounds	Allow 20% of the site to be minimally managed by 2030	Site Plans
Develop Beaumont's Nature Park	Engage fully with the DfE National Education Nature Park app	Completion of DfE Nature Park activities and initiatives



To impact the quality of our green spaces and biodiversity by increasing positive impacts) on our natural environment and limiting the negative impacts

Buildings and Construction

Targets

- To encourage and promote sustainable forms of construction that limit the negative impact on the environment (during the construction process)
- To deliver higher performing energy efficient buildings

Key actions

- Consult closely with design teams for Capital projects and establish clear expectations relating to environmental sustainability;
- Incorporate objectives into the tendering and procurement of construction work and compel designers to ensure that all new build completions achieve a BREEAM rating of “Very Good” or “Excellent”
- Employ appropriate energy saving strategies and technologies to reduce utility usage

Key performance indicators

- Estate wide energy consumption
- ‘Very good’ or ‘Excellent’ BREEAM performance ratings
- All tenders must include sustainability requirements
- %age waste sent to landfill per project as the pipeline of projects progresses

Objective	Target	Measure
Implement element of sustainability within all tenders	Require all applications for tender opportunities to demonstrate their commitment to sustainability.	Tender documentation
Transition to low consumption electricals	All lights to be LED by 2025. All newly installed electricals to be low consumption options where available	Lighting audit
Reduce energy wastage	Monitor usage when building empty and reduce baseline by 10% by 2030	Use EnergySparks to continuously monitor usage

Supporting policies and plans

- GEMS Strategy Documents
- School Capital Spend Development Plan



To improve the environmental impact of our construction and refurbishment projects





Targets

- To establish what is measurable and to create baselines for carbon emissions reduction targets from utilities
- To increase self generation of electricity and move to renewable suppliers
- Reduce digital and transport carbon footprints

Key performance indicators

- % of carbon dioxide emissions from heating per staff and pupil (Tonnes/FTE)
- % energy (KWh) produced from sustainable sources
- Reduction of storage to reduce digital carbon footprint

Key actions

- Consult with experts to audit, review and improve current systems; develop appropriate metrics to monitor emissions and analyse energy and carbon data
- Implement a “switch off” campaign
- Rationalise the use of the current meters and transfer to smart metering system
- Achieve progressive changes to energy contracts e.g. 100% renewable electricity
- Explore the potential for onsite renewable energies and reduce the amount of natural gas used on site; decrease the carbon emissions from heating
- Educate, Train and support staff, students and Beaumont Community to actively reduce digital carbon footprint and educate Increase use and scrutiny of building management systems (BMS) to control and monitor thermal performance of buildings (to allow reduction in plant run times and lowering of temperature set points)
- Use improved, energy efficient ICT hardware;

Objective	Target	Measure
Reduce emissions from Utilities	Reduce utility usage by 20% by 2025 (From baseline) and by 30% by 2030	Use EnergySparks to continuously monitor usage
Reduce digital carbon footprint	Reduction of server storage by 15% by 2025 and by 30% by 2030	Server storage amounts

Supporting policies and plans

- Travel Plan;
- ICT Policies



To reduce our carbon emissions whilst supporting the School's plans for the investment in and modernisation of the Estate



Targets

- To establish a communication plan and strategy to reach our target audiences (including our alumni) and to keep them informed and updated about our plans and progress
- To work towards Nationally recognised accreditations
- To improve our School and local communities' understanding of environmental issues
- To celebrate success stories
- To identify opportunities for collaboration locally and nationally

Key performance indicators

- Tracking of progress towards accreditation
- Engagement with School Library resources
- % number of pupils and staff engaged in school sustainability initiatives and local

Key actions

Communication

- Establish dedicated Library resources and a sustainability Library Hub
- Ensure that 'sustainability' features regularly and repeatedly on our website and social media platforms (Twitter, Instagram, Beaumont Life) and in the press (both local and national)
- Make greater use of the display areas and physical notice-boards/signage to raise awareness of sustainability issues and actions
- Celebrate the success of environmental action (e.g. in assemblies, online)
- Achieve nationally recognized awards for our environmental sustainability work
- Encourage staff and pupils to share their sustainability ideas
- Launch Climate Leaders award when available

Community Engagement

- Engage with our community to identify potential issues/areas of concern and to take action to address them
- Identify opportunities to increase our School's level of engagement with local, national and international environmental sustainability initiatives
- Continue to be involved in St Albans Sustainability Festival

Objective	Target	Measure
Achieve Accreditation	Achieve Green EcoSchool by 2025	Achievement of EcoSchools
Sustainability regularly features in Beaumont Life and Sustainability Marketing Campaign Launched	Launch Beaumont Sustainability "Get Involved" Campaign by 2025	Beaumont Life Editions and Campaign launch
Launch Sustainability Awards for students	Sustainability Awards included in all awards ceremonies	Number of students achieving Sustainability Award



To engage effectively with our School and local communities to achieve positive environmental action



Targets

- To investigate what can be usefully measured in terms of food consumption and wastage
- To promote options for reduced meat consumption; to increase the quality and variety of vegetarian/vegan options
- To improve our system of waste removal; to reduce the quantity of waste from catering
- To reduce our water and energy usage in the dining hall

Key performance indicators

- % level of meat purchase and % uptake of vegetarian options and positive feedback (from Catering company)
- % level of food wastage in terms of volume

Key actions

- Work with Chartwells to work out the best methods for reducing our environmental footprint e.g. Minimising packaging/plastic waste
- Improve the re-cycling facilities in the kitchen, dining hall and around the School site
- Reduce meat consumption by purchasing less meat and by increasing the vegetarian options
- Monitor using new installed Cashless Catering / LiveRegister software
- Create displays in the dining hall with important information about health, nutrition and sustainability issues related to the food chain
- Audit and review current food waste methods; carry out food waste measurement surveys and implement improvements
- Re-introduce drinking water in the dining hall
- Investigate the potential for working with local food charities/food banks

Supporting policies and plans

- Chartwells working strategy documents

Objective	Target	Measure
Achieve Accreditation	Achieve Green EcoSchool by 2025	Achievement of EcoSchools
Sustainability regularly features in Beaumont Life and Sustainability Marketing Campaign Launched	Launch Beaumont Sustainability "Get Involved" Campaign by 2025	Beaumont Life Editions and Campaign launch
Launch Sustainability Awards for students	Sustainability Awards included in all awards ceremonies	Number of students achieving Sustainability Award



To improve the environmental impact of our food and catering systems

Targets

- Understand the sustainability policies of suppliers and use this to drive decision making
- To seek out more environmentally / sustainable options for all purchase particularly paper / printing
- To ensure all budget holders are aware of the importance of sustainability and explicitly include a reference to it in the School's Financial Procedures manual
- To develop, over time, a better understanding of the environmental impact of the School's supply chain and endeavour to continually improve it

Key performance indicators

- Identification of purchases that could be replaced with alternatives that are more sustainable
-
- Successful in-year engagement with relevant suppliers
- Development of targets following information gathering exercise

Key actions

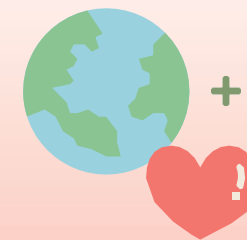
- Provide appropriate training and guidance to all staff who are involved in purchasing decisions
- Develop and implement a targeted supplier engagement programme to promote continual improvements by both suppliers and school purchasers

Objective	Target	Measure
Use Recycling sites / shops to purchase office equipment	80% of all new one off furniture procured through recycled sites	Purchase logs

Supporting policies and plans

- Financial Handbook

Environmental Sustainability Initial Strategy Plan



To identify and procure goods and services that are as sustainable as possible and, whenever practical, to influence positively the sustainability practices of suppliers

Targets

- To reduce the number of staff and pupils travelling to school by car (most notably in single occupancy vehicles)
- To reduce carbon fuel use by school road vehicles
- To use Modestars travel to set targets and monitor
- Parents / Carers to utilise the HomeRun app

Key performance indicators

- Modal split for staff and pupils commuting through annual travel survey
- SignUp to HomeRun and % of shared drives
- Fuel use monitoring of minibuses, coaches
- External Accreditations

Key actions

- Review the School's Travel Plan
- Deliver sustainable travel incentives and projects to encourage walking, cycling, use of public transport and car sharing. This might include some of the following: cycle schemes; cycle parking; electric charging points; public transport information displays, car sharing
- Maintain the end of trip on-site facilities for cyclists/runners (e.g. showers/bike racks)
- Investigate options for charging facilities for staff, explore salary sacrifice schemes and electric minibus opportunities
- Encourage use of HomeRun App for parents / carers
- Explore options for carbon offsetting for school trips
- Install improved video-conferencing facilities and the provision of support with regards to how to use them to reduce need for face to face meetings
- Always promote walking to school for Parents evenings, school events
- Work with Hertfordshire County council utilising |ModStars

Objective	Target	Measure
Increase parental use of HomeRun to facilitate car sharing	Parental participation across whole school to be 50%	HomeRun Analysis
Provide the opportunity for staff to have electric cars and move fleet to electric	Have charging facilities in place for all staff that require it and purchase electric minibus (first one by 2025)	PodPoint analysis



Supporting policies and plans

- Travel Plan
- Educational Visits Policy

Environmental Sustainability Initial Strategy Plan



To provide viable and accessible sustainable travel options for staff and pupils for travel to work, travel at work and travel for work and education which results in a reduction of carbon emissions



Targets

- To reduce non-hazardous waste to landfill from construction projects
- To achieve year on year increases in recycling as a proportion of waste
- To achieve continuous year-on-year reductions in waste arising per FTE for staff and pupils
- To reduce single use plastic
- To reduce printer paper consumption per pupil/staff headcount year on year
- Investigate options to reduce and reuse before purchasing

Key performance indicators

- Waste sent to landfill (tonnes or litres) - work with KP waste to get this measurement
- Waste mass generated per person (staff/ pupil) per tonnes/FTE

Key actions

- Audit the current waste systems to create baselines - work with KP Waste
- Create clear management plans, targets and systems for each waste stream
- Continue to work towards the total elimination of single use plastics
- Promote recycling and educate users about the importance of segregation; increase the number and visibility of recycling facilities around the site
- Purchase FSC paper for printers and for the limited number of external publications
- Audit and review use of school planners
- Use 'Paper Cut' software further to actively monitor printing usage and to introduce stricter quotas
- Create effective pupil engagement programmes to help them to come up with innovative ideas for reducing waste
- Source repairable and recyclable furniture
- Consider setting up the DIY PSHEE carousel and the 'Fix It' club

Objective	Target	Measure
Reduce waste collections	5% reduction year on year of waste collection in kg	KP Waste Statistics / Sustainability dashboard
To reduce printer paper consumption	20% year on year reduction in printing	Sustainability dashboard / PaperCuts analysis



To minimise and actively manage waste through elimination, reduction, re-usage and recycling



Targets

- To reduce total water consumption year on year against baseline data
- To recycle grey water
- To reduce water loss through leakage and wastage

Key actions

- Introduce more accurate measurement systems (e.g. smart metering)
- Implement the ongoing monitoring of water consumption data to assist in identifying areas of potential savings
- Seek opportunities for installing a programme of water management measures e.g. rainwater harvesting and sustainable urban drainage systems
- Introduce low water planting in garden areas
- Reduce water use in kitchens by improving food waste disposal and the modernisation of catering equipment
- Attend to leaks in water infrastructure promptly, consider leak detection systems in high risk areas (e.g. plant rooms)
- Increase the number and quality of the water-filling stations around the School site

Key performance indicators

- Total water consumption (m3)
- Total water consumption per staff and student (m3/FTE)

Objective	Target	Measure
Ensure efficient water usage through maintenance and monitoring of any leaks	No leaks detected	Caretaker logs





This initial strategy document highlights our genuine commitment to environmental sustainability. Given that we are at such a crucial stage in our planet's history, we understand how important it is for us to place environmental considerations at the heart of our School's culture. By taking decisive action now, we hope to play our part in combatting the negative effects of global climate change.

We are excited by our plans and look forward to working together with the whole school community to achieve our aims.

